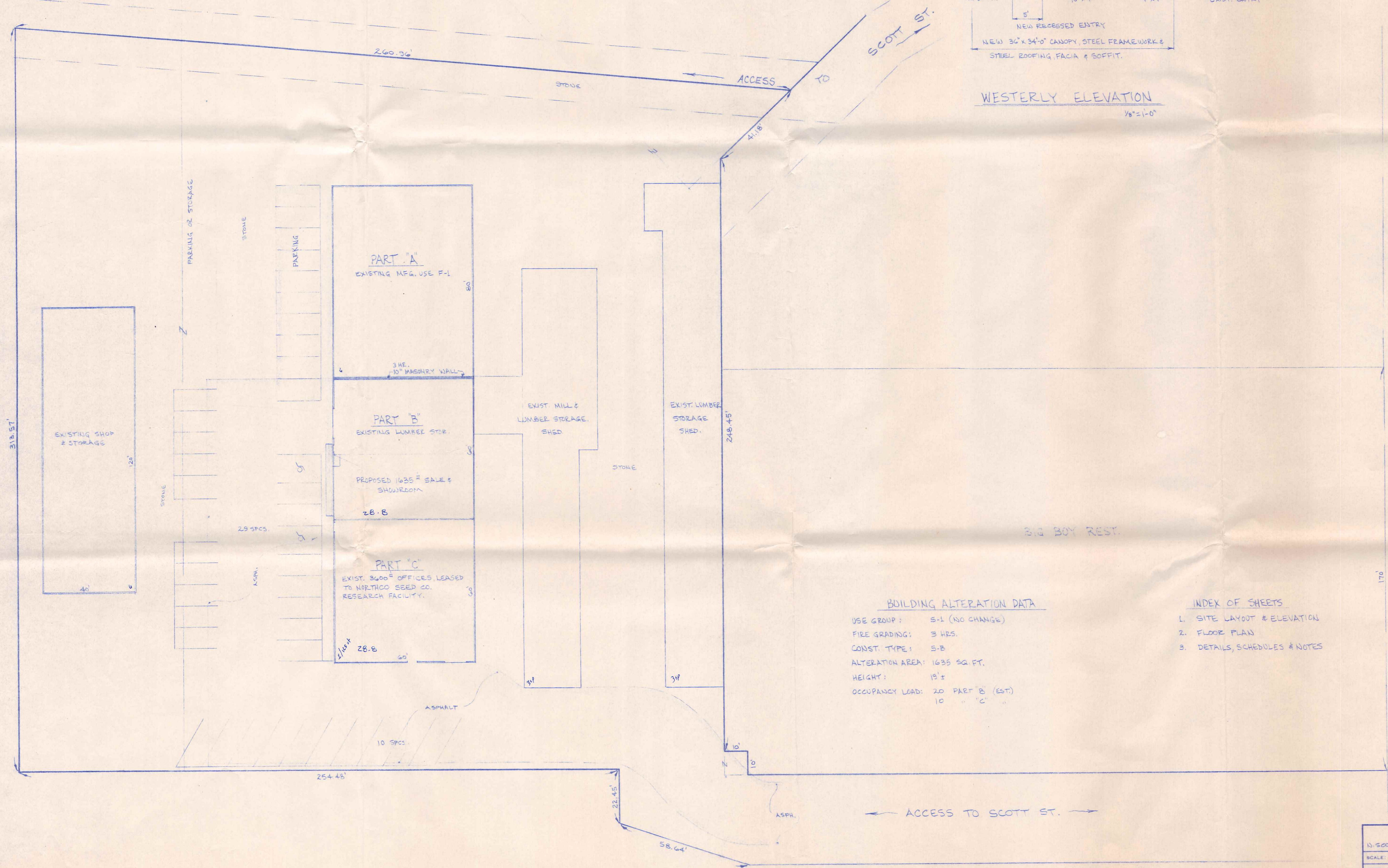


WESTERLY ELEVATION  
1/8" = 1'-0"



**BUILDING ALTERATION DATA**

USE GROUP:	S-1 (NO CHANGE)
FIRE GRADING:	3 HRS.
CONST. TYPE:	S-B
ALTERATION AREA:	1635 SQ. FT.
HEIGHT:	19'±
OCCUPANCY LOAD:	20 PART 'B' (EST) 10 " " 'C' "

**INDEX OF SHEETS**

1.	SITE LAYOUT & ELEVATION
2.	FLOOR PLAN
3.	DETAILS, SCHEDULES & NOTES

**NAPOLEON LUMBER CO.**

15 SCOTT STREET	NAPOLEON, OHIO
SCALE: NOTED	APPROVED BY:
DATE: FEB. 1963	DRAWN BY E.D.S.
SITE & PARKING LAYOUT & ELEVATION	
DRAWING NUMBER	
1 OF	

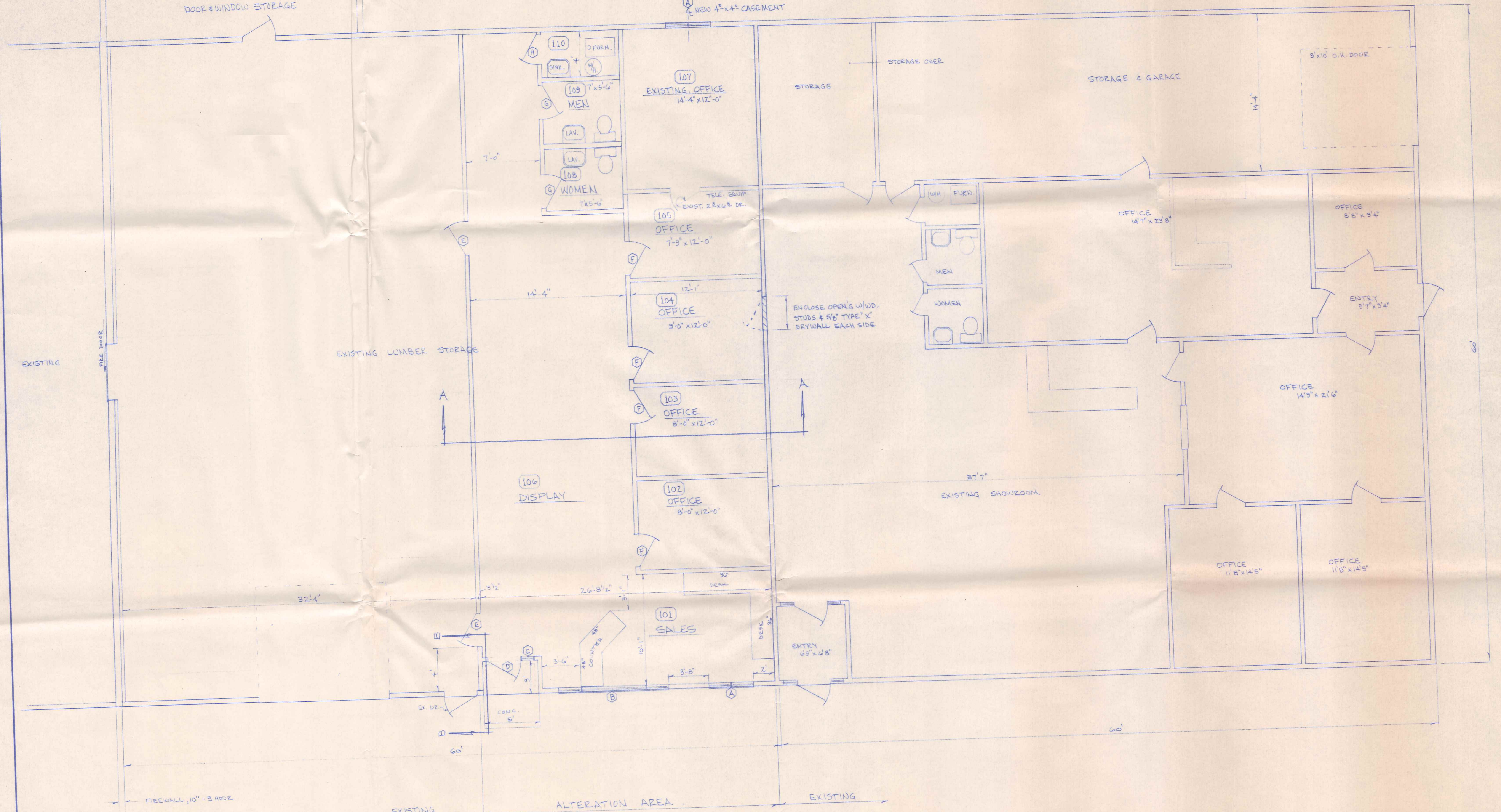
39 Spaces Shown  
+ 76 Parking Spaces  
Required

118  
W. Front

File 64F

TO MILL ROOM  
DOOR & WINDOW STORAGE

NEW 4'-4" CASEMENT



NAPOLEON LUMBER CO.  
12 SCOTT STREET  
SCALE: 1/4" = 1'-0"  
DATE: FEB. 1989  
OFFICE AREA FLOOR PLAN  
DRAWING NUMBER  
2 OF 2